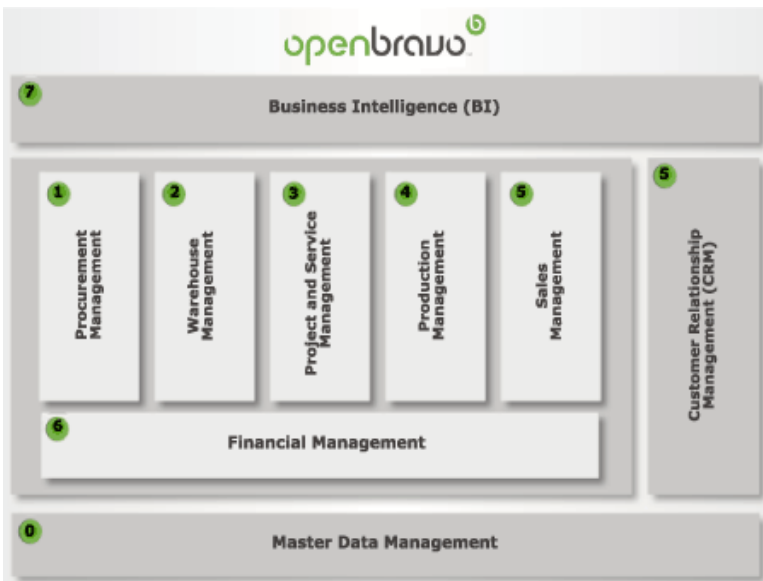




An ERP solution designed specifically for the SME (small to midsize firm). Developed in a web based environment, it includes many robust functionalities which are considered part of the extended ERP

- Procurement Management
- Warehouse Management,
- Project and Service Management,
- Production management,
- Sales Management
- Financial Management.

Additionally, this same application seamlessly integrates the rest of the areas, starting with a management scope directly helping clients with its CRM (Customer Relationship Management) and BI (Business Intelligence).



Openbravo is a web based ERP solution that is rapidly gaining popularity due to its broad range of functionality, ease of use and stability. Nevertheless, it is released under an Open Source license and itself is a fork of Compiere project which is another notable Open Source ERP solutions.

Open Source product do not have support or maintenance is a myth. In fact, in comparison to closed source product, Open source, specifically OpenBravo does provides far more extensive and fast support either through appointed consultants or from the OpenSource community where user support user.



Master Data Management

The correct management of the master data of your company (products, customers, vendors, etc.) is a fundamental aspect for guaranteeing the coherence and tracking of processes. Maintaining exclusive coding, avoiding duplications, and sharing the relevant information among all areas of your company is one of the challenges faced today by all types and sizes of organizations. Openbravo helps you to organize and centralize the key data of your company, facilitating the rapid and easy flow of information among all areas implicated in different company processes.

Procurement Management

Rates, purchase orders, goods receipts, invoice registration and accounting, purchase planning, etc. Openbravo's handling of the flow of supply guarantees the integrity, tracking, and homogeneity of the entire process. Each document in the supply process is based on the information contained in the previous document, so that repetitive introduction of data and human errors are avoided. In this way, it is possible to navigate through different documents that conform to a determined flow (order, goods receipt, invoice, payment) and know in real time the state of any given order (pending, delivered, partially delivered, invoiced, etc). The natural integration of this process with accounting guarantees that the finance department always has up to date and reliable data at its disposal.

Warehouse Management

Warehouses and bins, warehouse units, lots, serial numbers, packages, labels, receipts and deliveries, movements between warehouses, inventories, stock valuation, transport, etc. The warehouse management processes built into Openbravo allows the inventory in your organization to always be up to date and correctly valued. The possibility of defining the warehouse structure of your organization to unit level (storage bins) facilitates the exact localization of your stock at any time. Additionally, the capacity for managing product lots and the possibility of using serial numbers assure compliance with the tracking requirements imposed by the majority of industries.

Production Management

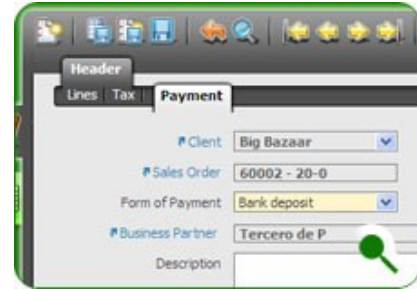
Plant structure, production plans, BOM's, MRP, manufacturing orders, job reports, costs of production, work incidences, preventive maintenance types, etc.

The production functions and plant management in Openbravo allow a complete shaping of the productive structure of each organization (sections, cost centers and work centers) as well as the relevant data for production: production plans (operation sequences), and products used to make one another. Currently, the functionality provided by Openbravo is orientated towards covering the usual necessities of a discrete production environment: production planning and requests related to procurement using MRP, creation of manufacturing orders, job reports (notification of times and consumption), calculating costs of production, notification of job incidents and maintenance reports.

Sales Management and Customer Relationship Management (CRM)

Prices, rates, varying quantity sales orders, shipments, invoicing, volume discounts, commissions, CRM, etc.

The functionality of Openbravo in the Sales Management module is expressly designed with the objective of allowing maximum flexibility and adaptability in its execution, needed in any commercial process. It is possible to link documents (orders, shipments, invoices) in any order that the company requires or even disregard any one of these that is not necessary. All this is achieved without sacrificing the coherence and integrity of information and guaranteeing the tracking of processes. The capacities of integration with order capture systems by PDAs extend the potential of the solution beyond the physical limits of the particular company.



Financial Management

Chart of accounts, accounts, budgets, taxes, general accounting, accounts payable, accounts receivable, bank accounting, balance sheet, P&L, fixed assets, etc.

The financial management functionality provided by Openbravo is designed to minimize manual data input on behalf of the user, thereby freeing them from tedious, routine tasks and allowing greater focus on other, more value added tasks. This increase in productivity is due to the financial department acting as collector of all the relevant actions generated from the other management departments. This occurs in such a way that these have an automatic reflection in the general accounting, in the accounts receivable and accounts payable as soon as they are produced.

Business Intelligence (BI)

Reporting, multidimensional analysis (OLAP), balanced scorecards.

Nowadays, business organizations handle a great deal of data in the practice of their business activities. This does not necessarily mean that they have available to them the necessary information for the management of their enterprise. The BI component of Openbravo, integrated into the management system, will help you to monitor of the state of your company, providing you with the relevant information for decision-making. The predefined balanced scorecard will allow you to verify, through the monitoring of a series of key indicators, if the defined strategy is being correctly implemented in your organization.



Project and Service Management

Projects, phases, tasks, resources, budget, expenses and expense invoicing, related purchases, etc.

This functionality is orientated towards companies whose activities are based on the delivery of projects and services. With relationship to projects, Openbravo allows for the management of budgets, phases, tasks, expenses and purchases related with each individual project. These projects may be related to monitoring construction projects or even sending out and sales and purchase related requests. The service component permits companies to define services and resources and control all activities. These activities may or may not be billable, for internal or external customers, and be monitored for incurred expenses at a detailed level.